

FURNIVAL CHAMBERS DIVERSITY DATA ANALYSIS 2018

Introduction

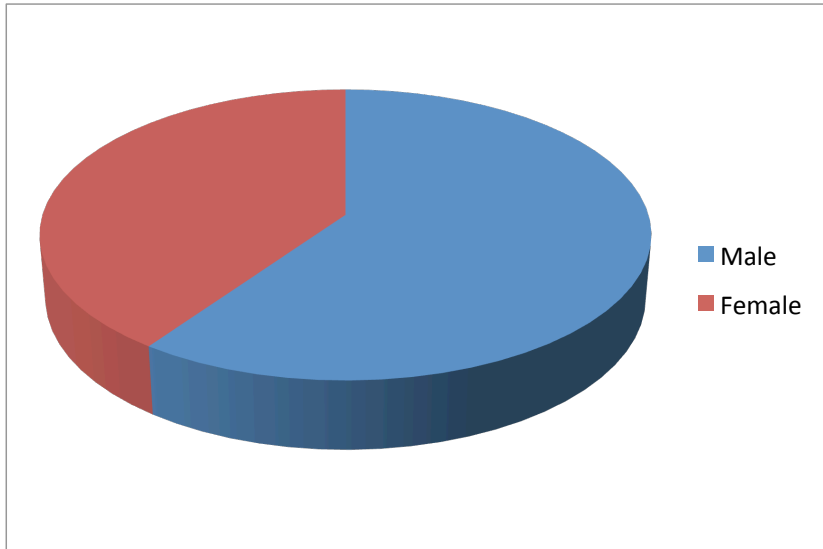
- 1** The data in this analysis was compiled from responses to a questionnaire carried out in February and March 2018.
- 2** At the time of the questionnaire, there were 81 members of Chambers (including QCs), 8 pupils (4 1st six, 4 3rd six) and 13 members of staff / clerks.
- 3** Of these, 69 members of Chambers (84%), 8 pupils (100%) and 12 members of staff (92%) consented to be part of the diversity data survey.
- 4** Completed diversity data questionnaires were received from 67 members of chambers (81.5%), 8 pupils (100%) and 12 members of staff (92%).
- 5** Of the 67 members of Chambers responding, 8 were QCs (66% of QCs) and 59 were juniors (86%).

DAVID DUROSE
DIVERSITY DATA OFFICER
31/05/18

Gender

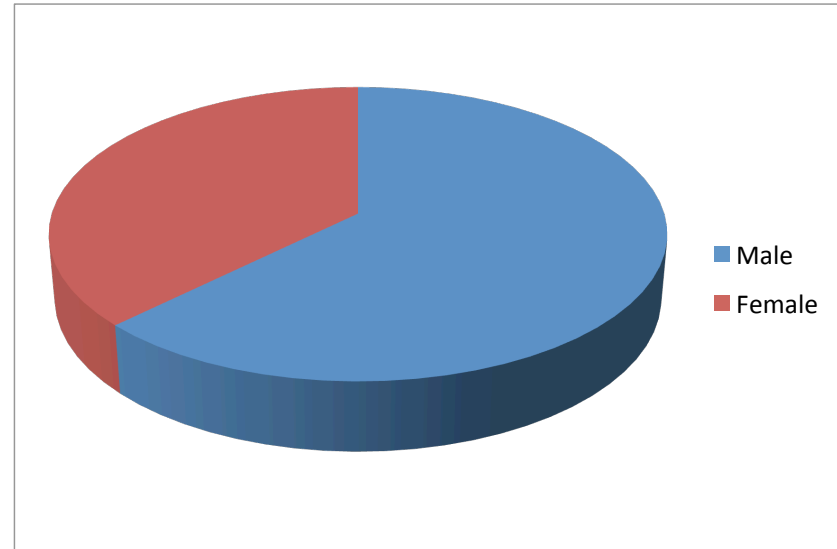
Whole of chambers (Members, staff, pupils)

	Number	Percentage	2015 Figures
Male	52	60%	52%
Female	35	40%	48%
Total	87		



Members of chambers (including QCs)

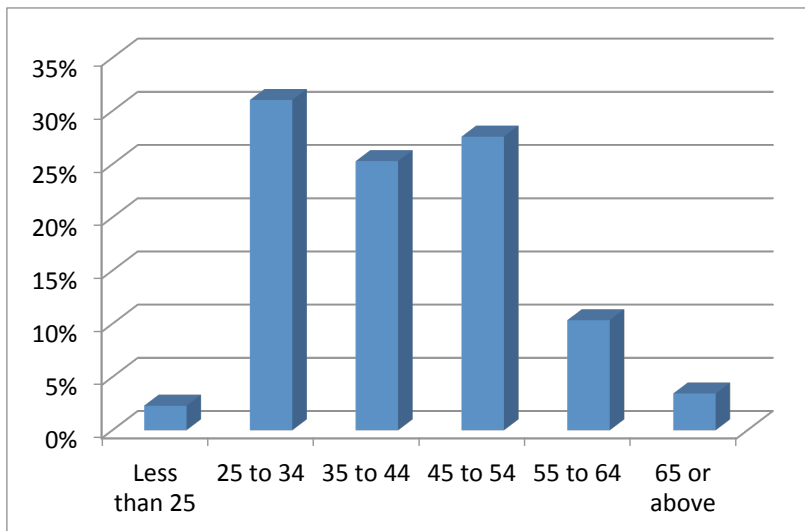
	Number	Percentage	2015 Figures
Male	42	63%	54%
Female	25	37%	46%
Total	67		



Age Distribution

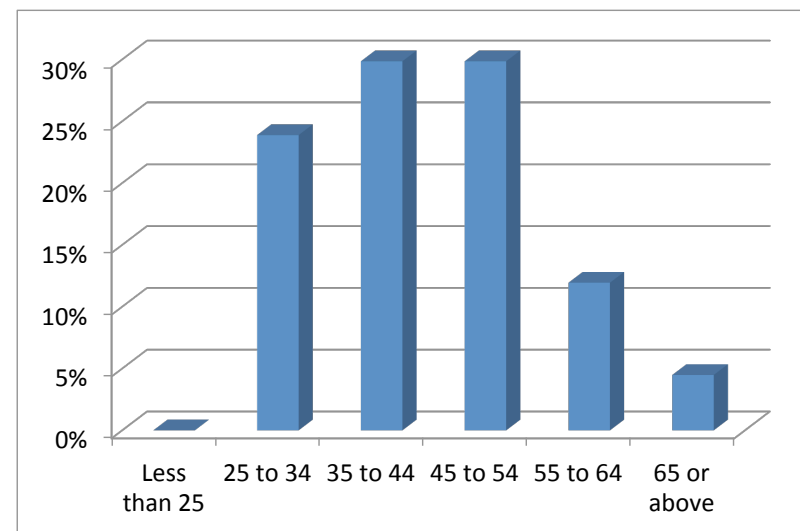
Whole of chambers (Members, staff, pupils)

	Number	Percentage	2015 Figures
Less than 25	2	2%	8%
25 to 34	27	31%	27%
35 to 44	22	25%	32%
45 to 54	24	28%	21%
55 to 64	9	10%	11%
65 or above	3	3%	2%
	87		



Members of chambers (including QCs)

	Number	Percentage	2015 Figures
Less than 25	0	0%	2%
25 to 34	16	24%	26%
35 to 44	20	30%	38%
45 to 54	20	30%	20%
55 to 64	8	12%	12%
65 or above	3	4%	2%
	67		



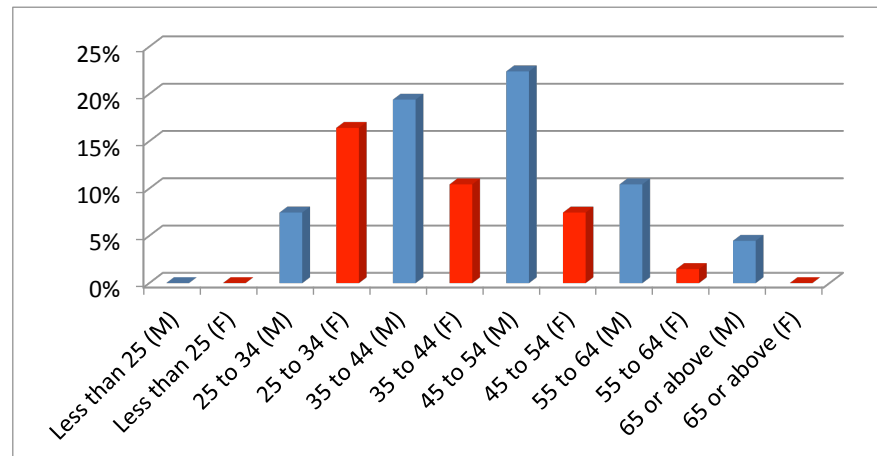
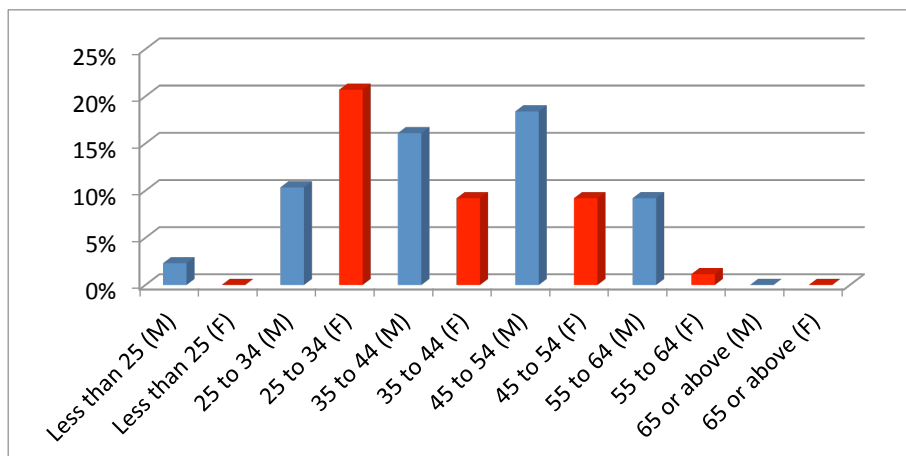
Age by Gender*

Whole of chambers (Members, staff, pupils)

	Number	Percentage
Less than 25 (M)	2	2%
Less than 25 (F)	0	0%
25 to 34 (M)	9	10%
25 to 34 (F)	18	21%
35 to 44 (M)	14	16%
35 to 44 (F)	8	9%
45 to 54 (M)	16	18%
45 to 54 (F)	8	9%
55 to 64 (M)	8	9%
55 to 64 (F)	1	1%
65 or above (M)	3	0%
65 or above (F)	0	0%
	87	

Members of chambers (including QCs)

	Number	Percentage
Less than 25 (M)	0	0%
Less than 25 (F)	0	0%
25 to 34 (M)	5	7%
25 to 34 (F)	11	16%
35 to 44 (M)	13	19%
35 to 44 (F)	7	10%
45 to 54 (M)	15	22%
45 to 54 (F)	5	7%
55 to 64 (M)	7	10%
55 to 64 (F)	1	1%
65 or above (M)	3	4%
65 or above (F)	0	0%
	67	

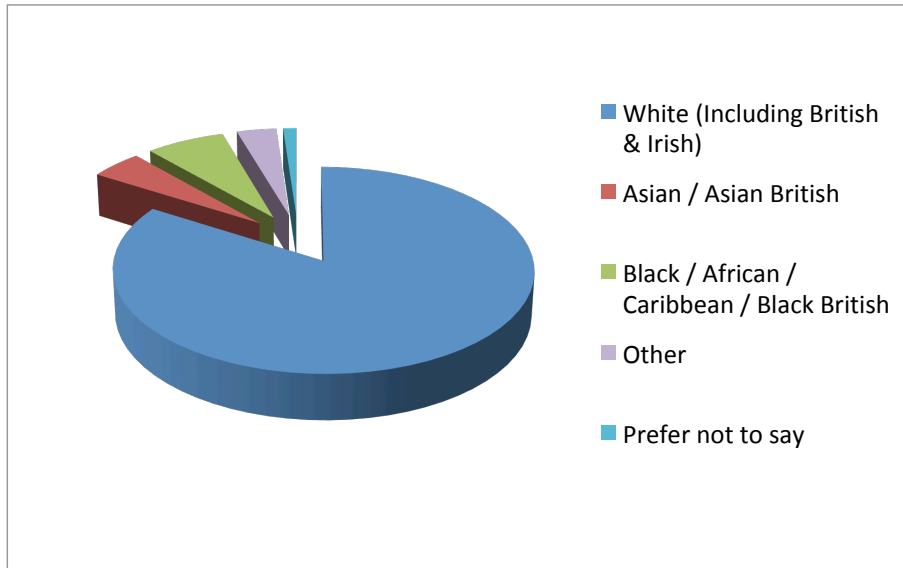


* This data was not available from the 2015 survey.

Ethnicity

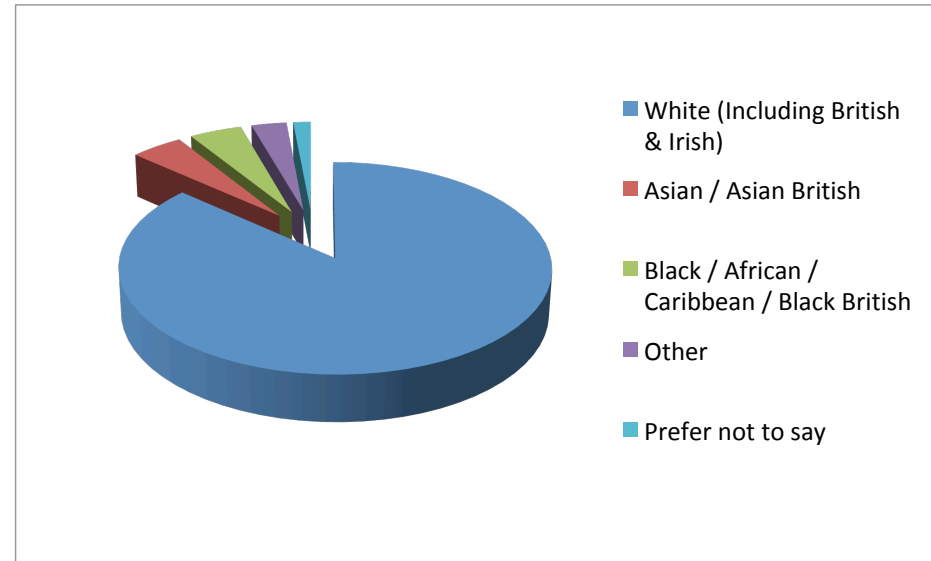
Whole of chambers (Members, staff, pupils)

	Number	Percentage %	2015 Figures
White (Including British & Irish)	73	84%	86%
Asian / Asian British	4	5%	
Black / African / Caribbean / Black British	6	7%	13%
Other	3	3%	
Prefer not to say	1	1%	2%
	87		



Members of chambers (including QCs)

	Number	Percentage	2015 Figures
White (Including British & Irish)	58	87%	90%
Asian / Asian British	3	4%	
Black / African / Caribbean / Black British	3	4%	10%
Other	2	3%	
Prefer not to say	1	1%	0%
	67		



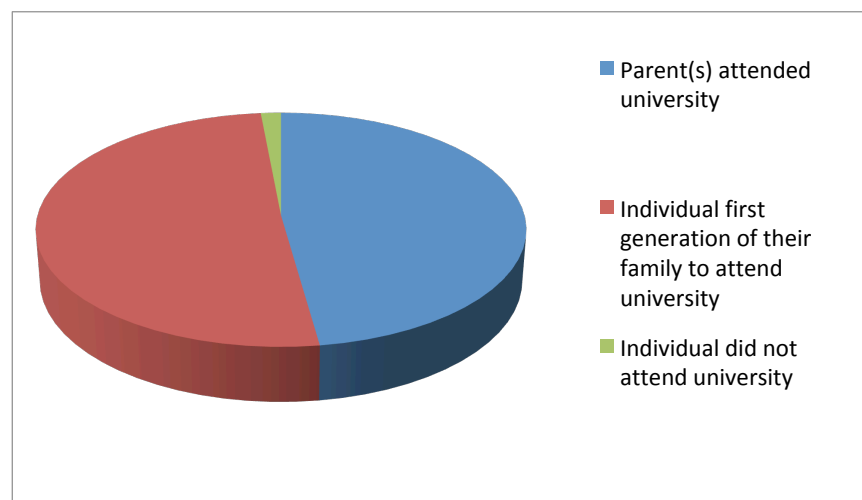
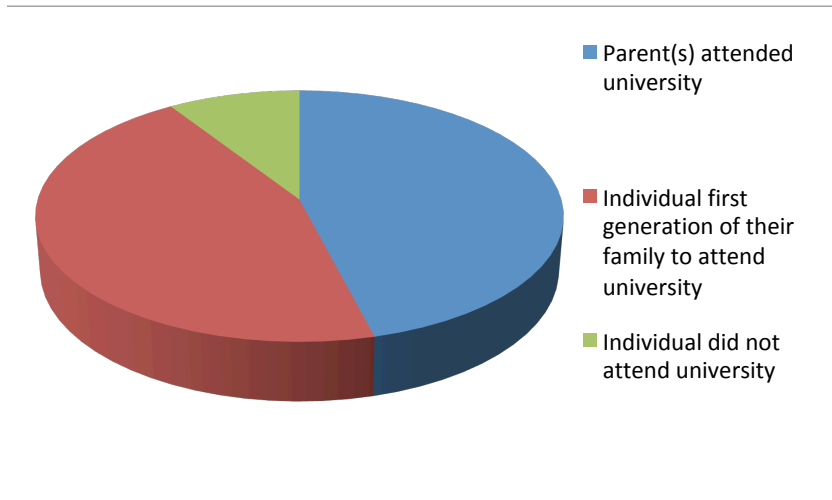
Parental Education

Whole of chambers (Members, staff, pupils)

	Number	Percentage	2015 Figures
Parent(s) attended university	40	46%	50%
Individual first generation of their family to attend university	39	45%	50%
Individual did not attend university	8	9%	-
	87		

Members of chambers (including QCs)

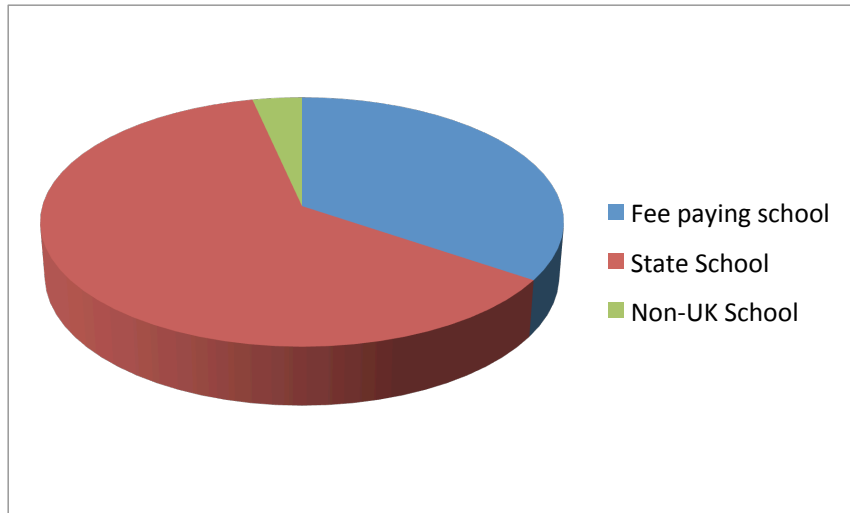
	Number	Percentage	2015 Figures
Parent(s) attended university	32	48%	57%
Individual first generation of their family to attend university	34	51%	43%
Individual did not attend university	1	1%	-
	67		



Schooling

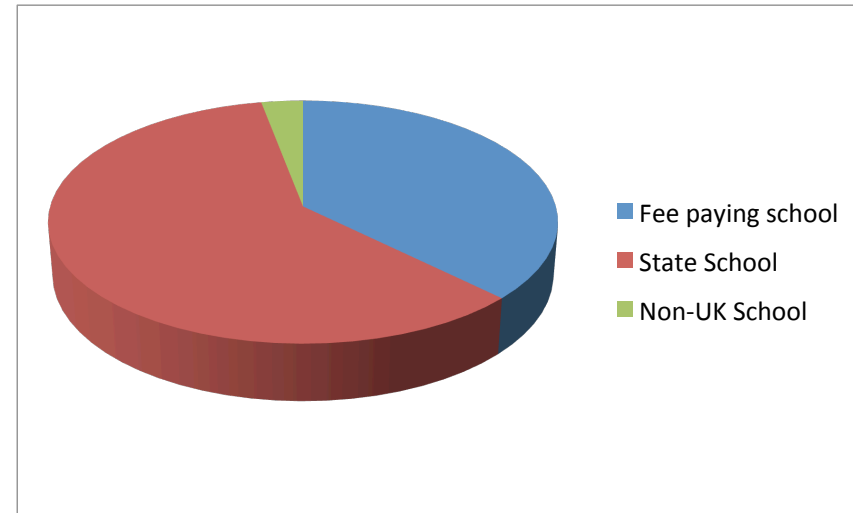
Whole of chambers (Members, staff, pupils)

	Number	Percentage	2015 Figures
Fee paying school	30	34%	42%
State School	54	62%	58%
Non-UK School	3	3%	-
	87		



Members of chambers (including QCs)

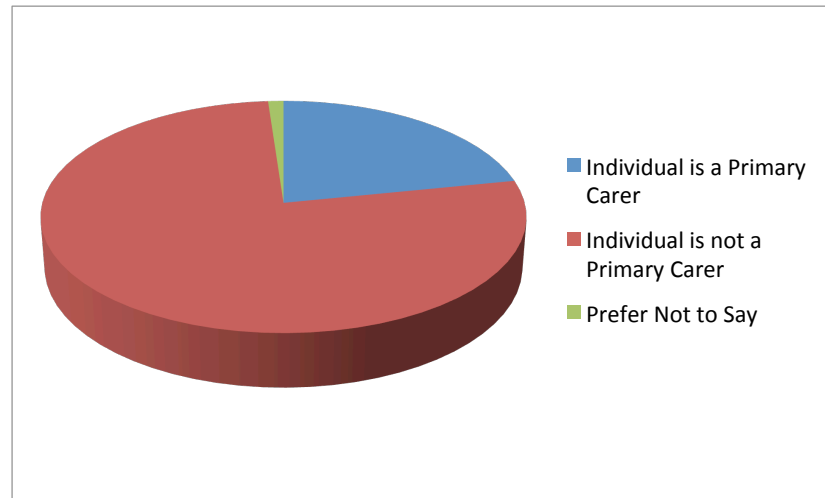
	Number	Percentage	2015 Figures
Fee paying school	25	37%	41%
State School	40	60%	59%
Non-UK School	2	3%	-
	67		



Childcare responsibilities

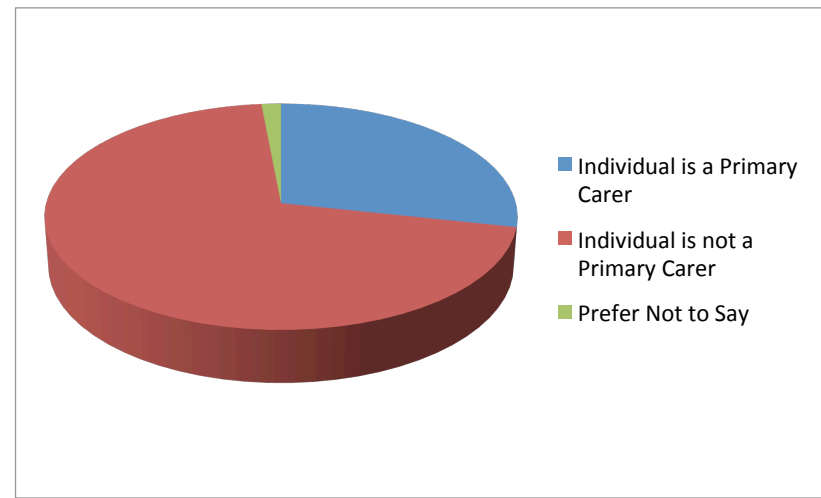
Whole of chambers (Members, staff, pupils)

	Number	Percentages	2015 Figures
Individual is a Primary Carer	19	22%	29%
Individual is not a Primary Carer	67	77%	71%
Prefer Not to Say	1	1%	-
	87		



Members of chambers (including QCs)

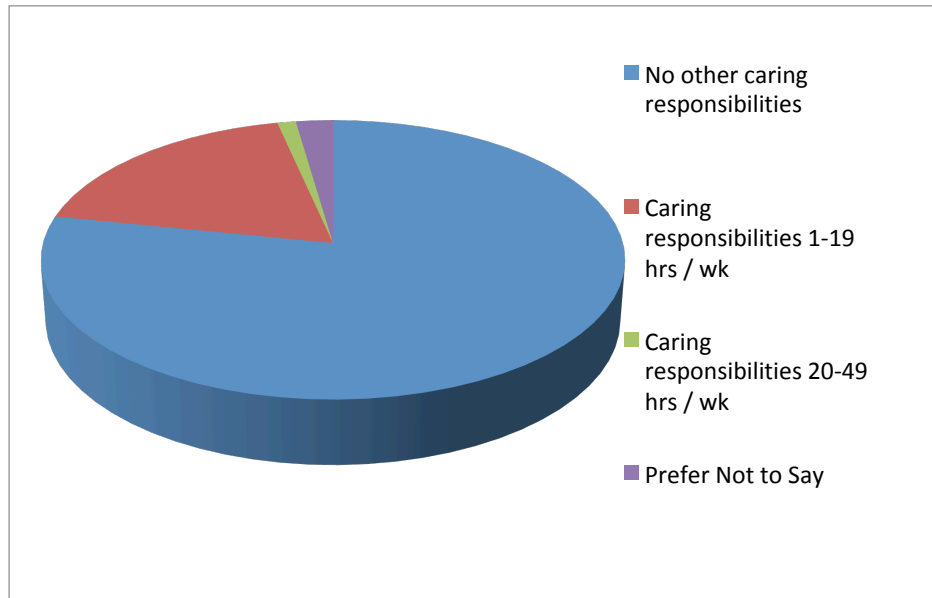
	Number	Percentages	2015 Figures
Individual is a Primary Carer	19	28%	34%
Individual is not a Primary Carer	47	70%	66%
Prefer Not to Say	1	1%	-
	67		



Other Caring Responsibilities Besides Childcare

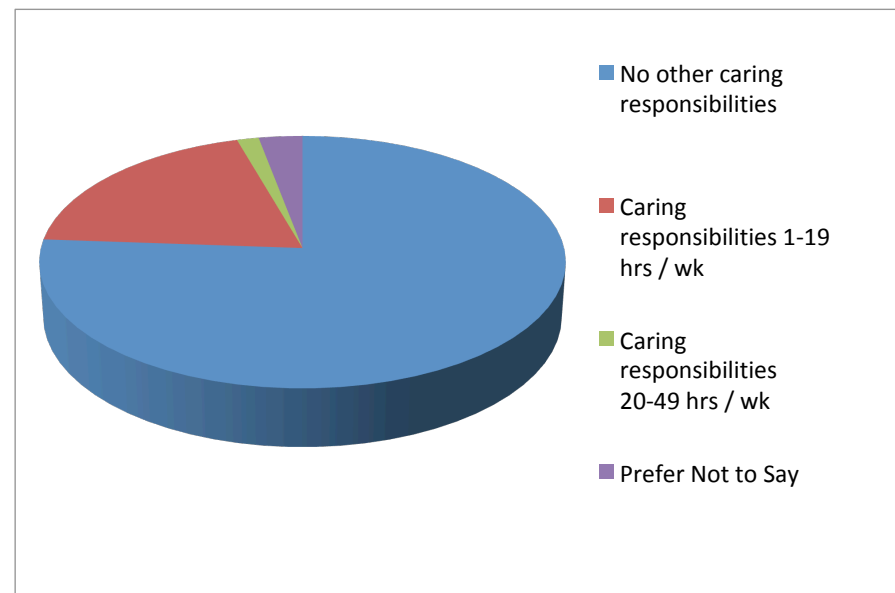
Whole of chambers (Members, staff, pupils)

	Number	Percentages	2015 Figures*
No other caring responsibilities	68	78%	85%
Caring responsibilities 1-19 hrs / wk	16	18%	15%
Caring responsibilities 20-49 hrs / wk	1	1%	-
Prefer Not to Say	2	2%	-
	87		



Members of chambers (including QCs)

	Number	Percentages	2015 Figures*
No other caring responsibilities	51	76%	86%
Caring responsibilities 1-19 hrs / wk	13	19%	14%
Caring responsibilities 20-49 hrs / wk	1	1%	-
Prefer Not to Say	2	3%	-
	67		



*Previous figures are not directly comparable as only a yes / no answer was sought and given.